



2 0 2 4

Public **SUMMARY**

Forest Management Plan | Paraná and São Paulo



Dear **READER**

On the following pages, you will learn a little more about the efforts made by Klabin to ensure the adequate management of its forests, as well as its social and sustainability policies. This is a demonstration of Klabin's commitment to generating wealth while continuously respecting nature, its employees, and society, in addition to maintaining its commitment to long-term adherence to the principles and criteria of the Forest Stewardship Council (FSC®) and the Programme for the Endorsement of Forest Certification (PEFC). To simplify the reading of this document, we identified the text changes made since the previous version of the Public Summary of the Management Plan, which are marked with the symbol "I." Enjoy your reading!

FSC® C022516



CONTENTS

DEAR
READER 02

ABOUT
KLABIN 06

FORESTRY
AREA 08

KLABIN CODE
OF CONDUCT 13

SOCIAL AND
ENVIRONMENTAL
RESPONSIBILITY POLICY
FOR HIRING SUPPLIERS 15

EXTERNAL
COMMITMENTS 18

DESCRIPTION
OF THE ENTERPRISE 26

**FOREST
MANAGEMENT** 30

**SOCIAL AND
ENVIRONMENTAL
RESPONSIBILITY** 38

**KLABIN AND
THE COMMUNITY** 43



**SOCIAL AND
ENVIRONMENTAL
RESPONSIBILITY** 50

**INDICADORES
SOCIAL AND
ENVIRONMENTAL
INDICATORS** 68



About Klabin

Klabin is the largest paper manufacturer and exporter in Brazil, being the only company in the country to provide the market with solutions in short-fiber, long-fiber, and fluff pulp, as well as being a leader in the corrugated cardboard packaging and industrial bag markets. Founded in 1899, it has 23 industrial units in Brazil and one in Argentina. In Paraná alone, it generates over 10,000 jobs (direct and indirect), in more than 25 municipalities located close to the Company's operations, mainly in the Campos Gerais region.



Klabin is divided into four business areas:

- Forestry – raw material for pulp production and sale of wood logs for sawmills and rolling mills;
- Pulp – short-fiber pulp, long-fiber pulp, and fluff pulp;
- Paper – kraft paper, cardboard, and recycled paper;
- Conversion – corrugated cardboard packaging and industrial bags.

The packaging papers and cards manufactured by Klabin, as well as its corrugated cardboard packaging and industrial bags, offer protection and safety to food, beverages, cleaning and hygiene products, electronics, cement, seeds, wheat flour, and chemical products, among others. Long-fiber, short-fiber and fluff pulp, applied either alone or in combination, offer essential characteristics to different types of paper, such as: resistance, softness and absorption in the ideal measure for hygiene products; resistance and opacity for printing and writing paper, and other specific properties required for special papers. The Company's management is oriented towards sustainable development, seeking integrated and responsible growth and combining profitability, social development, and environmental commitment.



Forestry Area

After the acquisition of the Monte Alegre Farm, the Forestry area was established to meet our plant's needs. In 1943, the first activities of planted araucaria and eucalyptus forests began and, in 1951, the first species of pine, originating from the southern United States, were introduced. At the base of our enterprise, the principles that guide the entire Klabin Group emerged: respect for nature and a continuous concern for sustainability.

Forest management practices, coupled with environmental preservation and social responsibility actions, allowed Klabin to be the first company in the pulp & paper segment in the Americas to receive the international Forest Stewardship Council® (FSC®) certification, in 1998. In the following year, the Company received certification for its management of medicinal plants and, in 2001, completing its cycle with certification of the chain of custody of non-timber forest products, opening up opportunities for Klabin to market phytoproducts with the FSC® seal.

Motivated to highlight the sourcing of the raw materials used in its products, Klabin received the FSC® certification in 2005 for its chain of custody relating to the production of virgin-fiber paper and cards at its Monte Alegre Unit. In 2007, the production processes for recycled paper, industrial bags and corrugated cardboard packaging were certified. In 2017, it also obtained certification from the Brazilian Forestry Certification Program (CERFLOR), internationally recognized by PEFC, for its forest management and chain of custody regarding the production of short-fiber and long-fiber pulp, in addition to fluff pulp for our Ortigueira Unit.

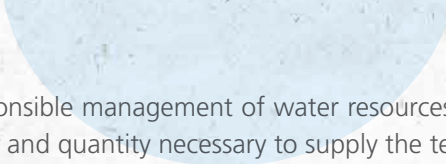

The Company's management is guided towards sustainable development, seeking integrated and responsible growth, which combines profitability, social development, and environmental commitment. The Angatuba Unit, located in the state of São Paulo (SP) is responsible for the production of over 130,000 metric tons of kraft paper per year. To supply raw materials to the plant and to ensure the sale of logs, the location also has a forest area consisting of approximately 4,800 planted hectares and 3,700 hectares of preserved forests in the Angatuba region. In 2009, the Unit received FSC® (Forest Stewardship Council®) certification for its forest management practices, demonstrating the conservation of natural resources, fair working conditions, and good relations with the community. The industrial unit also has the ISO 9001, ISO 14001 and OHSAS 18001 certifications, which demonstrate strict the quality standards applied in its operations.

SUSTAINABILITY POLICY

For Klabin, sustainability has a deep meaning in the Company's history and existence. It is the main foundation of business management and a long-term commitment to shareholders, customers, employees, suppliers and the communities in which we operate. From forests to packaging, we apply a model of self-sufficiency, respect for the environment, and the encouragement of the development of all stakeholders that make up the production chain.

- 1.** Actively seeking the transition to a low-carbon economy while applying and encouraging the direction of investments and financial instruments that consider values and performance linked to Sustainability, ensuring transparency and reliability in the data that guide decision-making, ensuring alignment with science and recognized parameters, and, whenever relevant, promoting data consistency verification by third parties.
- 2.** Innovating and adapting the business model to ensure greater responsibility in reviewing and defining the portfolio of products and strategic processes, towards positive solutions for nature.
- 3.** Mapping, measuring and providing transparency to the impact of environmental and social externalities generated by the Company's business in relation to the territory and its relationship with interested parties.
- 4.** Ensuring compliance with the Klabin Agenda within its horizon and goals established based on priority topics so that the Company's operations and growth strategy are oriented towards economic development, environmental sustainability, and social justice, considering the impacts and externalities of business.
- 5.** Guaranteeing the tone and statements in Sustainability marketing and communication approaches while ensuring that messages are correct, precise and guided solely by the performance and practices maintained by the Company.
- 6.** Promoting a culture of disseminating ethics and developing best corporate governance practices.

- 7.** Respecting and promoting human rights, in accordance with the UN Guiding Principles on Businesses on Human Rights and other national and international commitments that provide guidelines on the topic, which are relevant to Klabin's operations and its territories.
- 8.** Seeking to apply the most efficient and current technologies and engineering solutions in the implementation of new projects and enterprises while ensuring the protection of human health, natural resources, and the environment.
- 9.** Enhancing circularity by seeking to develop partnerships for new business models and the eco-efficient design of products and processes, which maximize the reduction, reuse and recycling of chain products and byproducts of the industrial process.
- 10.** Promoting collaboration with customers, suppliers, academia, organized civil society and other interested parties in the search for innovation for products and processes, as well as improvements aimed at sustainability for the value chain.
- 11.** Seeking competitive quality while aiming at the sustained improvement of its results, researching, developing and continually improving processes, products and services, both existing and new, to meet the expectations of customers, employees, shareholders, the community, suppliers, and other stakeholders.
- 12.** Guaranteeing the appreciation of the forest base through its transformation into sustainable and competitive products and ensuring the supply of planted wood for its industrial units, in a sustainable manner, without harming the associated natural ecosystems, in its own operations and in fostered projects.
- 13.** Ensuring that the Company's operations constantly seek to reduce its Greenhouse Gas (GHG) emissions, considering the environmental impacts of its operations and investment projects so that they are compatible with the long-term goals adopted by Klabin.
- 14.** Promoting the conservation of biodiversity, through the development of practices that guarantee an increase in ecosystem balance, while encouraging research and partnerships with academia and acting with a commitment to employing recognized forest management techniques, which includes conserving attributes and avoiding operations in natural preservation areas and/or areas that contain species relevant to national and global biodiversity.

- 
- 15.** Practicing responsible management of water resources, especially in areas of water stress, to ensure the availability of water in the quality and quantity necessary to supply the territories where it operates.
- 16.** Avoiding and preventing pollution, by reducing environmental impacts related to water effluents, solid waste and atmospheric emissions, continuously considering these elements in the maintenance and improvement of production processes, in the development and improvement of products, in forestry and logistics operations, and in the monitoring of critical suppliers based on economic, social and environmental aspects.
- 17.** Identifying in advance the negative social impacts caused by our forestry, industrial and logistics operations to avoid, prevent and mitigate them. Simultaneously, enhancing the positive impacts of our operations through programs and social actions established in partnership with public, private and civil-society institutions, while promoting engagement and frequent, proactive and transparent contact with interested parties.
- 18.** Complying with national (and international, where applicable) legislation and standards on product safety and quality, environment, and occupational health and safety; promoting the physical, mental and social well-being of direct and indirect employees, through the continuous improvement of working, health and safety conditions, with a commitment to consulting and promoting their active participation in the search for risk prevention and mitigation, as well as the personal and professional development of each individual.
- 19.** Practicing social responsibility with a focus on the communities where it operates in accordance with the private social investment platform and its lines of action: local development (boosting participatory public planning and management capabilities towards sustainable development), education, environment, and culture.
- 

Klabin Code of Conduct



Since its foundation, Klabin has sought to develop in order to provide its employees, customers, suppliers and society in general with a relationship supported by ethical conduct and socially recognized principles. The high standards followed by the Company are key factors for its growth. The assumptions of the Klabin Code of Conduct go beyond simple compliance with laws and policies and are intended to standardize standards among its advisors, directors, and employees, encouraging them to adopt, in their daily lives, behaviors and attitudes that are guided by basic values and guidelines established in this code. Klabin maintains the following communication channels for contacting the Ethics Committee – Ombudsman Office:

E-mail: ouvidoria@klabin.com.br

<https://www.canalconfidencial.com.br/klabin/>

Telephone: **0800 718 7814**



Klabin Archive



Social and Environmental Policy for Hiring Suppliers

At Klabin, all business operations are guided by ethics, transparency and respect for sustainability principles, in order to ensure economic balance, social responsibility, and environmental preservation. Therefore, the Company seeks suppliers that follow the criteria specified in the Social and Environmental Responsibility Policy for Hiring Suppliers. The contract model was revised based on the standardization of sustainability aspects, such as punctuality in delivery, credit status, respect for applicable legislation, compliance with tax authorities, prohibition of child and forced labor, and adoption of environmental protection measures.

Those interested in becoming Klabin suppliers are required to fill out the form by accessing the Company's website through the link **<https://klabin.com.br/fale-conosco/fale-conosco>**.







Wooden logs. Kablin Archive



External Commitments

Klabin seeks to play an active role in social, environmental and economic issues, voluntarily adhering to commitments proposed by recognized institutions, as described on the following pages.





GLOBAL COMPACT

A United Nations (UN) initiative aiming to engage companies and organizations in adopting 10 universal principles in the areas of Human Rights, Labor, Environment and Anti-Corruption Measures, in order to develop actions to face society's challenges.



SUSTAINABLE DEVELOPMENT GOALS

The Sustainable Development Goals (SDGs), have constituted, since 2016, a global development agenda with 17 goals and 169 targets established by the United Nations (UN) for governments, society, and the private sector. The UN initiative brings together governments, civil society and the private sector in a global agenda in favor of people, the planet, peace, and prosperity, defining global priorities and aspirations for 2030. Since then, the Company has prioritized 15 of the 17 goals, which inspired the Klabin Agenda 2030, consisting of the KSDGs – the Klabin Sustainable Development Goals.

- 01.** No poverty;
- 03.** Good health and well-being;
- 04.** Quality education;
- 05.** Gender equality;
- 06.** Clean water and sanitation;
- 07.** Affordable and clean energy;
- 08.** Decent work and economic growth;
- 09.** Industry, innovation, and infrastructure;
- 10.** Reduced inequalities;
- 11.** Sustainable cities and communities;
- 12.** Responsible consumption and production;
- 13.** Climate action;
- 14.** Life on land;
- 15.** Peace, justice, and strong institutions;
- 16.** Partnerships for the goals.



BRAZILIAN PACT FOR THE ERADICATION OF SLAVE LABOR

It brings together Brazilian and multinational companies that have made a commitment not to negotiate with companies that exploit slave labor. In addition to economically restricting employers who commit this crime, the Pact provides for the promotion of decent work, the social integration of workers in vulnerable situations, and the fight against solicitation. The companies that are signatories to the initiative participate in the Pact's monitoring process and are committed to publicizing the results of their efforts to ban slave labor.



CORPORATE PACT FOR INTEGRITY AND AGAINST CORRUPTION

According to the Ethos Institute, companies, upon becoming signatories to the pact, undertake to disclose Brazilian anti-corruption legislation to their employees and stakeholders; in order to ensure full compliance with it. Moreover, they undertake to prohibit any form of bribery, work for the legality and transparency of contributions to political campaigns, and strive for transparent information and collaboration in investigations, as necessary.



WOMEN'S EMPOWERMENT PRINCIPLE

To reinforce its commitment to diversity and promote an inclusive environment, in 2018, Klabin adhered to the seven Women's Empowerment Principles (WEPs). The United Nations Organization for Gender Equality (UN Women) initiative guides companies in empowering women within the organization, in the value chain, and in communities.

LGBTI+ COMPANIES AND RIGHTS FORUM

Klabin signed the LGBTI+ Companies and Rights Forum, which prepared 10 commitments to guarantee the respect and promotion of LGBTI+ human rights within Companies. The Forum has working groups divided by topics (leadership, health, communication, and others) that meet periodically to discuss how to move forward in relation to each of the commitments.

MOVEMENT FOR RACIAL EQUITY (MOVER)

This initiative establishes 10 guidelines for signatory companies to advance on the journey of racial equity with a commitment to working towards an inclusive environment, with initiatives that generate opportunities for Black professionals through training and awareness-raising actions, employability and promotion of social awareness.

CORPORATE PACT AGAINST SEXUAL EXPLOITATION OF CHILDREN AND ADOLESCENTS ON BRAZILIAN ROADS



Klabin is a signatory to this Pact, which aims to end the sexual exploitation of children and adolescents on the roads, by joining the Na Mão Certa (“In the Right Hands”) Program of Childhood Brasil and the Ethos Institute in 2016. It consists of six commitments, which address topics of the working conditions of truck drivers, awareness campaigns, project support, and monitoring of practices.

TASK FORCE ON CLIMATE-RELATED FINANCIAL DISCLOSURES (TCFD)



It is an initiative that provides recommendations to enable markets and to address the financial impact of climate change by increasing transparency regarding climate change-related risks and opportunities to promote better-informed financial decision-making.

SCIENCE-BASED TARGETS INITIATIVE (SBTI)

This initiative establishes methodologies to help companies set an emissions reduction target that is in line with climate science and sustainable economic development. Klabin was the first company in the pulp & paper sector in Latin America to have its goals approved by the SBTi.

BUSINESS AMBITION FOR 1,5°C – ONLY FUTURE

In 2019, we joined the UN Business Ambition for 1.5°C – OUR ONLY FUTURE global campaign. With that, we are committed to reducing GHG emissions, helping to contain the increase in the planet's temperature by 1.5° C.

RACE TO ZERO

For years, Klabin has been following a path towards combating climate change. The Company, which has sustainability as a pillar in its management, is aware of the urgency of the issue and the importance of mobilizing everyone to guarantee the future of our planet. In conjunction with the United Nations Global Compact Brazil Network, the Company invites companies and society to support the cause of reducing greenhouse gas emissions based on science.

SUSTAINABILITY ACCOUNTING STANDARDS BOARD (SASB)

SASB is a set of standards to help identify, manage and report on an organization's sustainability issues, including environmental, social and governance issues that may have an impact on its financial performance. Its main audience consists of large companies and investors. In 2020, Klabin started reporting the recommended SASB indicators for the packaging, pulp & paper, and forestry sectors.





GHG PROTOCOL

Since 2013, Klabin has been a part of this program, which aims to stimulate the corporate culture for the preparation and publication of Greenhouse Gas (GHG) emissions inventories, providing participants with access to international quality instruments and standards. Originally developed in the United States in 1998 by the World Resources Institute (WRI), the GHG Protocol is a tool used to understand, quantify and manage GHG emissions.

ACKNOWLEDGMENTS

DOW JONES SUSTAINABILITY INDEX

Klabin is part of the Dow Jones Sustainability Index (DJSI), standing out as one of the companies that are capable of generating greater long-term value through sustainable practices. Its listing, for the fourth consecutive year, in the “World” category helps recognize and boost the Company’s commitment to developing a solid sustainable business model, with care for the environment and society.

CORPORATE SUSTAINABILITY INDEX (ISE)

A pioneering initiative in Latin America and the fourth sustainability index in the world, ISE B3 was created by B3 S.A. – Brasil, Bolsa, Balcão in 2005, with initial financing by the International Finance Corporation (IFC), the financial arm of the World Bank. Klabin appears for the tenth consecutive year, among companies belonging to 15 industries, in this process, which evaluates, in an integrated way, the different aspects of sustainability, supporting investors in decision making and companies in improving their Environmental, Social and Corporate Governance (ESG) practices.





CARBON DISCLOSURE PROJECT (CDP)

Klabin is once again on the “A List” of CDP – a global information platform for investors – in the three programs: Climate, Water, and Forests, reinforcing the Company’s responsible actions. In addition to being the first company in Latin America to reach the leadership level in the three questionnaires, it was also recognized with the best performance in the “CDP Brazil – Climate Resilience” index, which measures performance in differentiated climate management practices and establishes a relationship between environmental initiatives and the financial performance of organizations.

ECOVADIS



Klabin is the first Brazilian company to implement, in 2019, the methodology established by EcoVadis, a global provider of corporate sustainability ratings. Klabin has remained in the Platinum category in the EcoVadis Corporate Responsibility Assessment for 4 years, joining the select group of 1% of companies with the best performance in the Pulp & Paper industry in the world. Topics such as labor practices and human rights, environment, ethics and sustainable purchasing are analyzed.



ABRINQ FOUNDATION

The ABRINQ Foundation’s program recognizes organizations that defend childhood and adolescence through the Empresa Amiga da Criança (“Child-Friendly Company”) seal, which certifies that, among other actions, we do not exploit child labor, do not allow it in our production chain, and promote social actions that encourage the education and learning of children and young people in the communities in which we operate.





Description of the Enterprise

As of December 2023, Klabin's forest areas in the states of Paraná and São Paulo were as follows:

Forest Areas	Total (ha) PR	Total (ha) SP
Klabin's total forest area	439,133	24,922
Certified forest area	361,992.36	8,574.937
Klabin's total planted forest	185,112	8,447
Certified planted forest	187,471.08	4,360.543
Native vegetation intended for Klabin's total conservation	185,422	9,309
Native vegetation intended for certified conservation	153,213.85	3672,791
Other total areas of Klabin PR	68,600	7,166
Other certified areas	21,307.44	541.603

The other areas under Klabin PR and SP ownership that are not included in the certification scope presented in this summary have their management monitored in other FSC® certification scopes.

1. REGION OF OPERATION

The Klabin Paraná unit is distributed across three regions: Telêmaco Borba, Guarapuava, and Jaguariaíva. The headquarters of the PR Forest Unit is located at the Monte Alegre Farm, in the municipality of Telêmaco Borba, in the Campos Gerais region. The Klabin Florestal PR and SP enterprises are distributed across 90 municipalities:

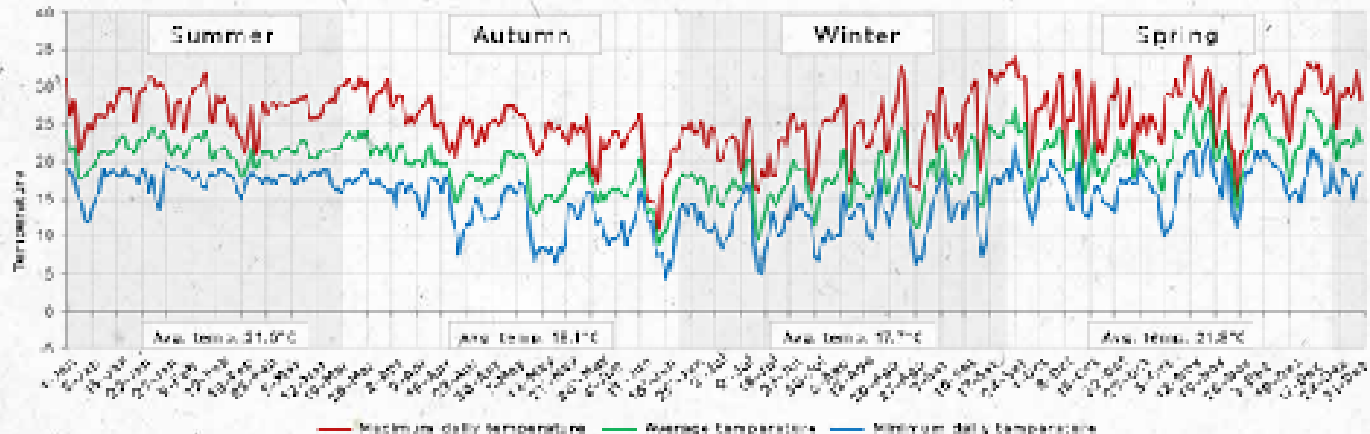
Adrianópolis, Angatuba , Arapoti, Barra do Chapéu, Bofete, Buri, Calmon, Campo Largo, Cândido de Abreu, Cândói, Carambeí, Carlópolis, Castro, Cerro-Azul, Congonhinhas, Cornélio Procópio, Cruz Machado, Curiúva, Doutor Ulysses, Faxinal, Figueira, General Carneiro, Grandes Rios, Guarapuava, Gureí, Ibaiti, Imbaú, Ipiranga, Irineópolis, Itapetininga, Itapeva, Itapirapuã Paulista, Itararé, Ivaí, Jaboti, Jaguariaíva, Japira, Joaquim Távora, Jundiá do Sul, Loanda, Londrina, Mallet, Mandaguari, Maria Helena, Matos Costa, Mauá da Serra, Nova Fátima, Ortigueira, Palmeira, Palmital, Paranapanema, Paula Freitas, Paulo Frontin, Pinhalão, Pinhão, Piraí do Sul, Pitanga, Ponta Grossa, Porto União, Porto Vitória, Prudentópolis, Reserva, Ribeira, Ribeirão Branco, Ribeirão Claro, Ribeirão do Pinhal, Rio Branco do Ivaí, Rio Branco do Sul, Rondon, Rosário do Ivaí, Santa Cecília do Pavão, Santo Antônio do Paraíso, São João do Caiuá, São Miguel Arcanjo, Sapopema, Sarutiá, Sengés, Siqueira Campos, Tamarana, Tapiraí, Telêmaco Borba, Tibagi, Tomazina, Tunas do Paraná, Tuneiras do Oeste, Umuarama, União da Vitória, Ventania, Xambê.

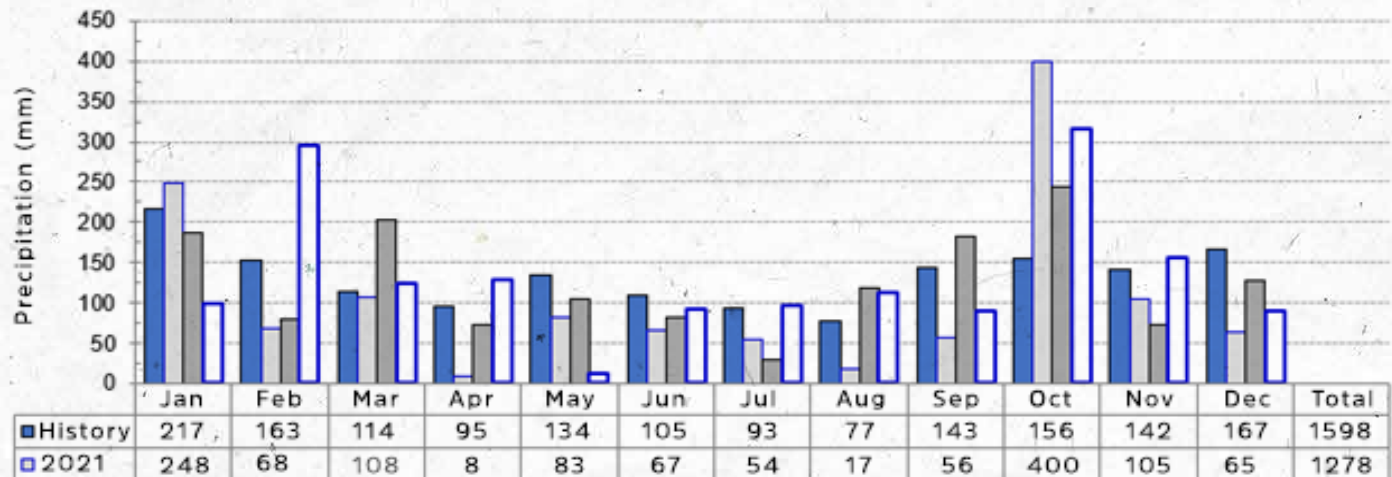


2. GEOCLIMATE DATA (TELÊMACO BORBA REGION)

Climate: The predominant climate in the Paraná unit is transitional subtropical to temperate, humid, mesothermal, with no defined dry season (Cfa/Cfb). It features hot summers with high rainfall, with frosts occurring infrequently in winter.

The predominant climate of the São Paulo unit is humid subtropical (Cwa), with rainfall in the summer and droughts in the winter, with an average temperature in the hottest month exceeding 22°C.





Geology: The main geological formations are found in the regions of Itararé, Rio Bonito, Palermo, Irati, Serra Alta, and Teresina.

Relief: The Monte Alegre Farm is located in the Second Plateau of Paraná, which presents itself as an intermediate level in the succession of the large plateaus of Paraná.

Hydrology: Klabin's areas exert great influence on water resources in their areas of coverage. This location, in Paraná, includes the Tibagi River, Ivaí River and Cinzas River basins. The farms where Klabin Angatuba operates cover an area of approximately 2,58 kilometers.



Forest Management

The Company is recognized for its sustainable management practices, which aim at multi-use timber and non-timber forestry (pulp, sawmill, medicinal plants, and phytoproducts laboratory). The use of environmentally correct practices used by the Company in its forest management, as well as adequate management of its landscape, ensures the excellent use of the production potential of forests and the protection of natural resources.

Klabin identifies and maps the environmental liabilities found in new properties (whether acquired or leased) and uses procedures to correct them, in addition to being committed to carrying out forest management on site in accordance with the FSC® and PEFC principles and criteria.

1. TIMBER FOREST MANAGEMENT

Research: Through study and new technologies, it seeks to guarantee the maintenance and improvement of forest productivity, considering the quality of plantations and fibers for use in pulp production. It also works in the specialties of Forest Improvement, Cloning and Biotechnology, Nutrition and Forestry, Forest Plant Health, and Wood Quality.

Forest planning and management: Based on inventory data (continuous and/or pre-cutting), studies and simulations, harvest rates and forest intervention strategies are defined to guarantee the supply of Klabin plants, as well as the supply of wood to the market.

Forestry development: It aims to maximize the productive potential of Klabin's forest assets through the improvement of techniques and processes, seeing better economic, environmental, and social results.

Supply of seedlings: The production of seedlings of the Pinus and Eucalyptus genera is conducted through asexual reproduction (vegetative propagation) and sexual reproduction (seeds) and aims to meet the partial demand for seedlings for the nursery. It has the following stages: mini-clonal garden, greenhouses, germination houses, shade houses, growth and hardening yards, substrate preparation, automatic sowing, and planting of mini cuttings. Production capacity is close to 12 million seedlings/year.

Silviculture: Silviculture activities are divided into land preparation with operations that guarantee the conservation of soil and water resources, planting of seedlings, control of leafcutter ants, control of weeds, fertilization (in accordance with technical recommendations), and crop treatments.

Wood supply: The mechanized and integrated harvesting system guarantees the cutting of wood in places of difficult access due to the characteristics of the soil (mud, slopes, etc.), as well as reducing the loss of raw materials in the process. Additionally, forest mechanization aims to provide better working conditions and safety for employees. This activity is conducted under strict control to protect the adjacent native forest. Klabin is a pioneer in generating energy from biomass boilers in the pulp & paper industry. All branches, leaves and logs with less than 8 centimeters in diameter remaining in the harvested areas are joined together and crushed, becoming biomass. This material is used in paper mill boilers and, when burned, generates energy for paper machines. By adopting this system, the company stops using fuel to generate energy at its plant in Paraná and considerably reduces emissions of polluting gases.

Road maintenance: The opening and maintenance of the road network (roads, firebreaks, bridges, culverts, etc.) are carried out based on environmental planning that delimits the areas of planting, preservation, main and secondary roads, firebreaks, and water resources.

Expansion process: The main goal of the expansion process is to supply the wood supply proposed by the plant, through prospecting areas in different modes, such as acquisition, leasing, Plante com a Klabin (Plant with Klabin), and purchase of wood. The asset assessment and valuation cycle consists of eight stages: prospecting, prior documentation, macro planning, operational assessment, pricing – final adjustments, documentation, release of the area, and start of operation. Each stage involves technical assessments of the respective areas related to the property.

2. NON-TIMBER FOREST MANAGEMENT

The Phytotherapy Program, a project relating to the use of Non-Timber Forest Products (NTFP), is an important example of the scientific use of native forests preserved by Klabin. It began in 1984, as an artisanal project, and began to operate on a manipulation scale in 1989. The Program seeks to improve the quality of life of the community (employees and families), the preservation, and the rational multiuse of biodiversity present in forest areas native species and in the understories of commercial plantations.

Management systems: Flora management to supply raw materials for the Phytotherapy Program takes place in three distinct ways: management of medicinal plants in preservation areas, agroforestry system, and cultivation. Processing of raw materials: Good manufacturing practices are followed to transform the obtained byproduct (raw material) into an active ingredient, which involve cleaning, selection, drying, packaging, and grinding of medicinal plants.

Production: The production of the Phytotherapy Laboratory represents the industrial process of Non-Timber Forest Products (NTFP). The process features 100% traceability, a handling/production scale based on local demand, and specific transformation techniques, taking as a parameter the percentage of morbidity existing in the communities around the company and the process sustainability calculations.

Quality control: A unit of analysis to guarantee the quality of manufactured products, the correct use of operational procedures, environmental control, and capacity building of the workforce. It applies to all activities carried out by the Phytotherapy Laboratory (packaging materials, maintenance and cleaning, environments, finished products, and human resources capacity building).





Compounding Pharmacy: It represents the NTFP distribution area, involving market service, as it seeks results from the use of final products and social responsibility processes, focusing on improving the quality of life of the community, allowing easy access, assisted service, and appropriate debts through payroll.

Raw material traceability: It represents all tracking, information network, and control functions. The technical-administrative processes of planning, production, cleaning, storage, distribution, transportation and feedback are included in this process.



Klabin Archive

3. ASSET PROTECTION

Klabin has a forest heritage security structure that seeks to prevent and reduce damage to heritage assets. Through preventive and/or corrective measures, mobile patrols and surveillance, the Company protects the local fauna and flora from the action of hunters and fishermen. The Environmental Police of Paraná is one of the partners in this work.

Preventing and Fighting Forest Fires

In the 1960s, the Company developed, in partnership with the Federal University of Paraná (UFPR), a program with the aim of creating, disseminating and monitoring fire prevention and firefighting plans on its properties. In 1980, Klabin created the Forest Firefighting Groups (GCIFs), whose main goal was to train field teams in combat.

Structure for Fighting Forest Fires	PR	SP
Heritage and Forest Protection Control Center (0800-728-0607), Plant, Yard. Wood and mechanical workshop.	11	-
Monitoring towers	18	-
Vehicles	28	-
Fire trucks	6	1
Water filling stations	64	-
Vigia Florestal com veículos	23	-
Forest brigades	675	-
Extension of firebreaks, dividers, contours, and roads.	15,833 km	-
Average fire/year	58.9	-
Fire brigade – manufacturing area	-	1
Fire brigade – Forest Service Provider	-	1

Social and Environmental Responsibility



Klabin has a direct and indirect impact in the socioeconomic dynamics of communities by promoting an increase in income through the distribution of taxes in the municipalities where it operates, by developing social, educational and environmental programs, creating direct and indirect jobs and changing local dynamics while encouraging community empowerment.

KLABIN AND ITS EMPLOYEES

People are of great importance to Klabin. Therefore, we select and make a point of retaining the best professionals, who are aligned with our values and are committed to building a better company on a daily basis.

Better for everyone: customers, suppliers, employees, people in the community, friends, family members, neighbors, or any of the millions of people who use the Company's products every day.

For Klabin, people are more than resources within a company. Therefore, it abolished the term Human Resources, which was replaced by People & Management. As a more current and accurate term, this nomenclature highlights the respect and importance that the Company dedicates to human capital, a crucial piece that drives its business. That takes into account the fact that

people bring, through their individuality, skills and potential that contribute to building a culture of engagement, development and results among all employees.



Klabin Archive.

Occupational Health and Safety:

In April 2005, the Company implemented the Klabin Excellence in Occupational Health and Safety, a corporate program that aims to promote and disseminate occupational health and safety management techniques and tools, composing a system that enables the identification of risks and treatments for effective control, aiming to guarantee the life, health and physical integrity of people. Klabin offers a series of benefits, which are presented from the moment of the interview.

MORE SAFETY IN FORESTRY:

Klabin's Forestry area has a challenging goal: to achieve a rate of less than one accident for every 1 million man-hours worked within three years – in other words, to reach a world-class level of workplace safety.

To overcome this challenge, it is necessary to develop a culture of safe production, contributing to encouraging the practice of active care, in which employees perform their activities while taking care of themselves and their coworkers, while allowing themselves to be taken care of by their peers. Klabin's concern is precisely to create the conditions to ingrain this culture, in order to guarantee the safety and well-being of direct and indirect employees.

To this end, we have training programs and awareness, monitoring and inspection actions aimed at preventing accidents across our areas of operation. These actions, in addition to those

of the Internal Accident Prevention Committees (Comissões Internas de Prevenção de Acidentes – CIPAs), which are present in all units, provide information to our Occupational Health and Safety Program (OHS). At the corporate level, we also have a Health and Safety Committee, composed of 30 members from all hierarchical levels. Its role is to act in all units through leadership, with preventive actions, campaigns or programs that aim to generate change and commitment. All Klabin employees are represented on these committees, as leadership is involved in their activities and decisions.

The safety practices established by the labor legislation and collective bargaining agreements are strictly followed by our employees.

We also have, as a rule, the participation of service providers in the Contractors' Safety Committees, known as Comsecons, which exist in each unit.

We also have clauses on OHS in all formal agreements with unions, aimed at our workers' safety.

FOREST AREA SAFETY PROGRAMS

Caminho Certo ("Right Path") Program

Logging truck drivers – professionals in the Forestry sector – attend quarterly lectures on traffic safety. On these occasions, they also have the opportunity to share stories and facts they have experienced, which are later published in the comic book *Boleia*, which is published by Klabin, allowing drivers to bring safety information to their family members.

Florestal em Família ("Family Forestry")

Employees' spouses or partners can help our professionals become aware of safety attitudes, helping to avoid accidents.

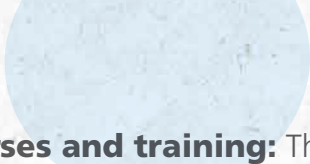
In this program, they also receive guidance on safe behavior, which they can pass on to other people.

Matrix Safety Management (SFM)

This is a new methodology used, which reinforces the safety production culture through the control of safety reports and occurrences. The project is based on three pillars: cross-control of information, developments, and systematic monitoring of information.

Future career: Employees' spouses or partners can help our professionals become aware of safety attitudes, helping to avoid accidents.

Solidity – Klabin is a company with over a hundred years of operation in the Brazilian market. It is a leader in the industry, with numerous certifications and market recognition. Even those who have not heard of Klabin have certainly come into contact with some of its products, which are packaged by major brands in the country.

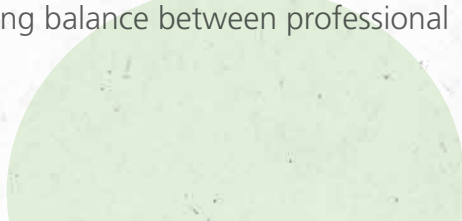


Courses and training: The Company offers courses for different roles and career stages. The Company's professionals are prepared to become better workers. This makes a big difference. The Company contributes to the development of its employees, who participate in the development of the Company. The Klabin Business School is one of the examples of this practice, supporting professional development and leadership training across the Company.

Internal Environment Management: Just as Klabin takes care of the forests, it also preserves its working environment. The Company is dedicated to the safety of its processes and the management of the internal climate, so that professionals can feel safe and motivated in their daily work.

High performance: Leaders are continuously attentive to the performance of professionals, so that the Company can maintain a reciprocal relationship with each individual. Klabin promotes employee performance assessments and encourages the definition of indicators and targets for the composition of variable remuneration in eligible positions.

Quality of life: For Klabin, well-being is essential for employee productivity and quality of life. To this end, the Company maintains the Klabin Quality of Life Program (Programa Klabin de Qualidade de Vida – PKQV), coordinated by health and human resources professionals who are part of the Preventive Medicine and Quality of Life Committee. The Program, which is based on five pillars – preventive medicine, nutritional guidance, exercise/integration, alternative therapies, and educational actions – puts into practice actions that are aimed at achieving balance between professional and personal life.



Klabin and the Community



In the communities where it is present, Klabin seeks to establish engagement with stakeholders through knowledge of the territory, establishing guidelines and goals to act on possible impacts linked to forestry and manufacturing operations. The development of projects, programs and actions that focus on education and local development makes up the Company's social and environmental investment platform.



Klabin Archive

KLABIN AND THE COMMUNITY

Project	Description	Results		
		2021	2022	2023
Klabin Caiubi Environmental Education Program	An environmental education program that aims to disseminate concepts of ecological awareness among teachers and students in municipal schools. 148	teachers and 3,000 students from Telêmaco Borba, Imbaú, Ortigueira, Tamarana, Reserva Ventania, Curiúva, and Sapopema	Caiubi: 154 teachers and 3,295 students from Telêmaco Borba, Imbaú, Ortigueira, Tamarana, Ventania, Reserva, Curiúva, Sapopema, and Paranaguá	281 teachers and 5,187 students from Telêmaco Borba, Imbaú, Ortigueira, Curiúva, Reserva, Ventania, Sapopema, Tamarana, and Paranaguá
Matas Legais ("Legal Forests") Program	Developed in partnership with the Association for the Preservation of Life and the Environment (Associação de Preservação do Meio Ambiente e da Vida – Apremavi), it promotes rural property planning, conservation and environmental education actions in the states of Paraná and Santa Catarina. It also guides small and medium-sized owners in carrying out operations with greater efficiency and profitability, in addition to preserving ecosystems. Producers take courses, joint efforts, lectures and exchange visits and receive free seedlings of native plants. The program also encourages forestry with planted pine and eucalyptus forests, organic agriculture, and ecotourism.	57 new owners 53,913 seedlings donated 2,087 hectares of demarcated Permanent Protection Areas (PPAs)	Legal forests: 47 new owners, 65,894 seedlings donated, 2,648.3 hectares of PAAs demarcated.	52 new owners, 38,215 seedlings donated, 2,542.55 hectares demarcated.
Matas Sociais ("Social Forests") Program	Developed in partnership with APREMAVI, SEBRAE, and the Municipalities. Matas Sociais encourages family farming and assists small rural producers in the production stages, from environmental adaptation, with conservation and restoration projects, to the marketing of products in local markets, including training actions, property diversification, and incentives to associations and cooperativism. The program has been carried out since 2015 in the municipalities of Telêmaco Borba, Ortigueira, Imbaú, and Reserva, in Paraná. Since July 2019, it has been expanded to five more municipalities in Paraná, thanks to the good results achieved: Sapopema, Curiúva, São Jerônimo da Serra, Tibagi, and Cândido de Abreu.	70 new properties, 278.28 hectares of PPAs and demarcated legal reserves, 67 protected springs (Native Vegetation), 29,363,000 seedlings planted, and 175 monitoring visits carried out	<p>Matas Sociais, which encourages family farming, is present in 11 cities in Paraná, reaching more than 1,100 properties serving, in 2022, over 4,000 people involved.</p> <p>The program also worked with city halls in the Campos Gerais region to implement the Municipal Inspection System (Sistema de Inspeção Municipal – SIM), which inspects and legalizes the sale of products of animal origin in municipal establishments, including restaurants and hotels.</p> <p>It also supported the implementation of the Law and Regulation of the Municipal Inspection Service (Serviço de Inspeção Municipal – SIM) of Products of Animal Origin in the municipalities of Ventania, Imbaú, and Telêmaco Borba.</p> <p>Holding of the Matas Fairs at the entrances of the Klabin Units in PR (Telêmaco Borba and Ortigueira) and the 1st Green Fair at the Telêmaco Borba Bus Terminal, as an action by the Municipality in partnership with the Family Farming Cooperative Hub of the Paraná Central North Region and the Matas Sociais Program.</p>	87 new properties, 307.7 hectares of native remnants and PPAs demarcated, 29 protected springs, 37,063,000 seedlings planted, 248 monitoring visits carried out. Survey carried out with 310 program participants in August 2023: 86% of farmers acknowledge environmental benefits, 67% increased their food production, 58% reduced the use of pesticides, 57% of farmers increased their income, 46% expanded their marketing networks, and 93% of respondents rate the program positively.

KLABIN AND THE COMMUNITY

Project	Description	Results		
		2021	2022	2023
Plante com a Klabin ("Plant with Klabin")	Plante com a Klabin is a reformulation of the Forest Promotion Program, aimed for small, medium and large rural producers. In this initiative, they are invited to participate in the Company's forestry expansion process through the cultivation of pine and eucalyptus on their properties and encouraged to integrate the forest with the other activities they carry out on their properties. Plante com a Klabin is an excellent option for owners to generate income, complement their production portfolio and bring new jobs and development to the region.	1,953 contracts	1,984 contracts	1,968 contracts
Klabin Passo Certo ("Right Step") Program	Founded in 2008, in partnership with Studio 3 Cia. de Dança, the Klabin Passo Certo Program consists of contemporary dance and capoeira activities for children and teenagers who are the children of employees, aged between 6 and 17 years old, with the main goal of promoting artistic manifestation and the appreciation of culture and art.	Telemachus Borba: 35 Ortigueira: 46	Telêmaco Borba: 68 Ortigueira: 43	Telêmaco Borba: 116 Ortigueira: 63
Beekeeping Program	Klabin makes its forests available to boost the development of production chains that bring benefits to communities, particularly in the generation of additional income, and to the environment. The initiative is currently being developed in partnership with the Beekeepers' Associations of Telêmaco Borba, Ortigueira, and Arapoti, in Paraná.	46 beekeepers	47 beekeepers	47 beekeepers
Meninas Cantoras da Klabin ("Klabin Singing Girls")	Composed of girls aged between 7 and 17 years old, daughters of employees at the Monte Alegre Unit, Paraná (PR) and young students from the community, this project offers musical theory, rhythm and vocal technique lessons, in addition to promoting companionship. The participants have already had the opportunity to perform in a number of cities in the states of Paraná, São Paulo, and Santa Catarina, to an audience of more than 12,000 people.	Telêmaco Borba: 34 students Ortigueira: 42 students	Telêmaco Borba: 87 students Ortigueira: 58 students	Telêmaco Borba: 87 students Ortigueira: 58 students
Klabin Passo Certo Program for Female Employees	It aims to provide moments of socialization in art and culture through Contemporary Dance, promoting a renewal in the mind and physique of participants through expressions that portray people's daily lives and feelings, using different concepts, dynamics, and composers.	Not held	11 students	11 students

KLABIN E A COMUNIDADE

Project	Description	Results		
		2021	2022	2023
Volunteering Work: Terra Viva ("Living Earth") Klabin Volunteer Association.	Terra Viva Klabin Volunteer Association, a non-profit entity, was created in 2003 and has been active since then in the organization and promotion of citizenship and solidarity actions with the support of employees and their families. Projects can be specific, such as collection warm clothes, food, milk, blood donations, and other actions related to commemorative dates, or educational, such as guidance on finding first jobs and technical and creative classes, such as guitar, language, computer courses, etc. The audiences served are diverse: children and young people in situations of social risk or with physical disabilities and the elderly.	106 volunteers	106 volunteers	40 volunteers
Klabin Semeando Educação ("Sowing Education")	The Klabin Semeando Educação Program works to improve the management of public resources allocated to education, with an emphasis on results, seeking the balance between school management, infrastructure, resources, and pedagogical practices. The main goal is to improve the results of official indices, such as Brazil's Basic Education Development Index (Índice de Desenvolvimento da Educação Básica – IDEB). It is held in Paraná, in the municipalities of Telêmaco Borba, Ortigueira, and Imbaú.	146 schools from municipal networks participating in the project	Semeando Educação supported municipalities to improve the Basic Education Development Index (IDEB), measured based on students' learning in Portuguese and mathematics, according to their approval rate. In the three municipalities in Paraná that have been in the program since the beginning, in 2015, we reported a 41% increase in the IDEB score in Telêmaco Borba, 13% in Ortigueira, and 16% in Imbaú, with the first two still above the target projected by IDEB. In 2022, the Klabin Semeando Educação Program went to 2 more municipalities in Paraná: Congonhinhas and Rio Negro. The 1st Teacher Training Program was also held – Klabin Digital Wolf Education – Robotics Laboratory – FazGames Partnership.	PR: 159 schools, 773 teachers, 132 managers and over 15,000 students from Telêmaco Borba, Imbaú, Ortigueira, Tibagi, Reserva, Curiúva, Sappema, Ventania, Congonhinhas, Rio Branco do Ivaí, Rio Negro, and Dr. Ulysses SP: 22 schools, 201 teachers, 56 managers and over 4,000 students from Angatuba and Itararé
Vôlei em Rede ("Net Volleyball")	The Vôlei em Rede – Núcleos Paraná project, promoted by Instituto Comparar, has the main objective of teaching volleyball in a playful way to public-school children and adolescents aged 9 to 15 years old, including essential values for the training of each of them. The project takes place in the municipalities of Telêmaco Borba and Ortigueira.	Online training once a month with teachers	1,032 girls and 556 boys benefited from the program.	1,024 girls and 621 boys benefited from the program.

KLABIN E A COMUNIDADE

Project	Description	Results		
		2021	2022	2023
Public Management Support	The Public Management Support program aims to provide municipalities with modern management processes and tools, which are capable of supporting planned and participatory development. To this end, municipalities can rely on specialized technical support from Interação Urbana, a consulting firm specializing in public management, for the technical development of programs, actions, goals, indicators, and budgets, as well as to prepare their Multi-Year Plans, ensuring greater clarity in the projects and result indicators. It is held in the municipalities of Telêmaco Borba, Ortigueira, Imbaú, Tibagi, Reserva, Curiúva, Sapopema, Ventania, Rio Negro and Paranaguá, in Paraná, Otaclio Costa, Correia Pinto and Lages, in Santa Catarina, Angatuba, in São Paulo, and Goiana, in Pernambuco.	In 2021, the Strategic Government Planning was expanded in relation to previous years, increasing from 7 to 10 municipalities in Paraná.	Through the Public Management Support Program, the Company provided specialized planning consulting and supported the development of the Multi-Annual Plans (MAPs) of new municipal administrations in 10 cities in Paraná (Telêmaco Borba, Ortigueira, Imbaú, Sapopema, Tibagi, Reserva, Curiúva, Paranaguá, Rio Negro, and Ventania), Meeting with all mayors of municipalities in the Public Management Support Program (MSP) to choose priority actions in Government planning.	We maintained the program in 9 municipalities in PR, namely: Telêmaco Borba, Ortigueira, Imbaú, Sapopema, Tibagi, Reserva, Curiúva, Rio Negro, and Ventania. In 2023, these municipalities had their Multi-Year Plans monitored by a specialized consulting firm, in addition to an assessment of the effectiveness of implementing these actions.
Solid Waste Program	Klabin's Solid Waste Program, developed alongside the Caminhos do Tibagi Intermunicipal Consortium since 2012, has promoted a number of actions to support waste sorting in seven municipalities in the Campos Gerais region, in Paraná: Imbaú, Ortigueira, Reserva, Tamarana, Tibagi, Telêmaco Borba, and Rio Branco do Ivaí. It includes the provision of structures and equipment, assistance in the formalization of associations and cooperatives and monitoring activities, training, and institutional strengthening for collectors of recyclable materials.	2,053 metric tons of recyclable materials recovered in the territory of Klabin's Solid Waste Program in Paraná. This equates to a monthly average recovery of 205 metric tons/month.	The Program was extended in 2022, and we held the 1st Training Workshop for Public Environmental Managers with 7 municipalities that are part of the Caminhos do Tibagi Consortium: Telêmaco Borba, Imbaú, Ortigueira, Tibagi, Reserva, Sapopema, and Rio Branco do Ivaí, with 38 participants and preparation of Action Plans and definition of goals for the next 2 years. During the year, roughly 2,887 metric tons of material were recovered, a 19.8% increase compared to the previous year, and around 1,342 metric tons of paper. Other results; - 63% increase in income - 26% increase in the volume of mass recovered in year 1 - Intermunicipal Solid Waste Management Plan (Caminhos do Tibagi Consortium – 6 municipalities) New waste sorting warehouse in Imbaú and Rio Branco do Ivaí and renovation of the warehouse of the Ortigueira and Reserva cooperatives.	Since its implementation in 2021, the program has contributed to an increase of around 84% in the income of recycling agents. In 2023, Telêmaco Borba cooperatives began to process glass, a material previously not marketed in the region. The RECICLATB cooperative became the Ambipar ViraSer Social Franchise. Among other results and challenges: - More than 3,180 metric tons of waste were recovered in recycling institutions in 2023 - The number is 13% higher compared to that recorded in 2022 - 1,783 people involved in environmental education actions

KLABIN E A COMUNIDADE

Projeto	Descrição	Resultados		
		2021	2022	2023
<p>Telemaco Borba Artistic Gymnastics</p>	<p>The dedication and talent of the athletes from the Artistic Gymnastics Training Center (Centro de Treinamento de Ginástica Artística – CTGA) of Telemaco Borba are highlighted in competitions held across Brazil. The sport has been taught for nine years through a partnership between Klabin and the Municipality of Telemaco Borba, guaranteeing the development of the sport and contributing positively to the physical training and culture of young students in the region.</p>	<p>In 2021, given the pandemic scenario, classes were held in an online format.</p>	<p>The Center features the participation of over 100 children. Telêmaco Borba-based athlete, Ariely Miranda, won the gold medal at the 41st Brazilian Artistic Gymnastics Tournament, in the children's category (up to 15 years old), held in Goiânia, from on November 15-20. The category featured 98 participants representing clubs from all over the country.</p> <p>Ariely has been one of the new talents selected in the classes, in an agreement with the Municipality by the Municipal Department of Education and the Artistic Gymnastics Training Center (CTGA), since she was 9 years old.</p>	<p>Organization of the Paraná Artistic Gymnastics Cup, an event that closes the competitive calendar of the Paraná Gymnastics Federation. The Telemaco Borba athletes stood out for their technique during their presentations, winning a total of 19 medals and one trophy.</p>
<p>Encantos do Imbaú (“Charms of Imbaú”)</p>	<p>It is a social and educational project carried out in partnership with the Coexistence and Strengthening Bonds Service (Serviço de Convivência e Fortalecimento e Vínculos– Contrturno) in the municipality of Imbaú, featuring guitar, keyboard, recorder, singing and music theory lessons.</p>	<p>Classes held online for 80 children and adolescents.</p>	<p>In 2022, the project resumed its face-to-face activities. One of the actions carried out for the group served was the visit to the movie theater. Eighty students from the project watched the film Toy Story 4. For many of them, who are situations of vulnerability, it was the first time they had contact with the big screen. Initiatives such as this strengthen our commitment to encourage access to culture, in addition to strengthening ties with communities located near our operations.</p>	<p>In total, 80 children and 70 seniors are part of the project. Throughout 2023, music classes continued, with the choir participating in various events in the city (June Festivals, picnic, guitar circles in the city's parks, conversation circles on musical topics, theater with music, visits to the Police Department, with performances by the students, visit and performance at the Guardianship Council, performance on Family Day, performance on the month of May on combating child sexual abuse and exploitation, performance during the week of the elderly, and Christmas cantata (planned).</p>
<p>Dois Passos para a Mudança Ortigueira (“Two Steps to Change in Ortigueira”)</p>	<p>Since 2015, Klabin has supported the MuDança Project at the Fr. Lívio Donati de Ortigueira Children and Adolescents' Home, where it has been working in educational projects, focusing on the global development of individuals, with dance helping children and adolescents learn to face the difficulties of life, as well as the development motor development, reasoning, coordination, rhythm, balance, resistance, persistence, alignment, discipline, self-confidence, and self-care.</p>	<p>In 2021, with the release from the State Government, the project returned in October featuring activities and classes.</p>	<p>Around 80 children are served and are part of the Dois Passos para a MuDança de Ortigueira Project. In 2022, with the end of the pandemic, face-to-face classes were resumed, with the aim of reestablishing and bringing children and adolescents back into contact with the public again. The institution was also able to participate in festivals and tournaments.</p>	<p>In 2023, the project's students participated in the 2023 Paraná Dance Show Final, held in Curitiba. In total, 80 children are part of the project at the Children's Home.</p>
<p>Superação Athletics in Reserva</p>	<p>Klabin formed a partnership with the Superação athletics project in Reserva, PR. Young people from rural areas receive encouragement to practice sports and are already achieving positive results in competitions.</p>	<p>-</p>	<p>In 2022, 10 competitions were held in four different states, a year that made history thanks to the record number of medals won: 101, with 67 at regional level, 18 at the macro-regional level, 14 at the state level, and two at the national level, one of which was gold, at the Brazilian School Games, won by athlete João Emanuel Domingues, who became the first athlete from the Telemaco Borba Regional Center to become Brazilian school champion.</p>	<p>The athletics team from Colégio Estadual do Campo Teófila Nassar Jangada, from the district of José Lacerda, in Reserva, PR, achieved the best result in history with 123 medals in the School Games throughout 2023. 55 students benefited by the Superação project, sponsored by Klabin two years ago, focusing on the training and social inclusion of children and young people in the region.</p>





Escola Municipal
JOÃO CANEDO DA SILVA





Social and Environmental Responsibility

The practice of social and environmental responsibility is a premise of Klabin, which promotes and supports social, cultural and environmental projects in the communities where it operates.



DIALOGUE CHANNELS:

With the aim of strengthening the transparent relationship and expanding communication with communities and stakeholders, Klabin maintains Fale com a Klabin (“Contact Klabin”), a set of communication channels, some of them available 24 hours a day, 7 days a week, as shown in the chart below.

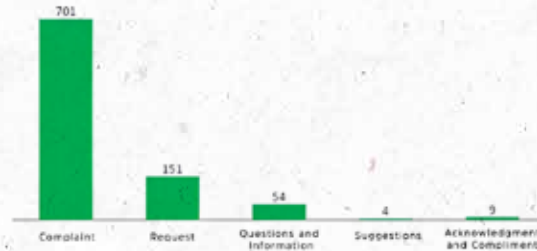
Canais de comunicação	Descrição
Website	A virtual space where the public can access information on the Company, such as its history, products, social and environmental programs, environmental practices, business, financial and sustainability reports, news, and human resources, among many others.
Lectures	Participation in various events in the community and institutions on topics such as: environment, technology, research and development, and human resources, among others. It is an opportunity for the public involved to learn about the Company's practices and have the opportunity to ask questions about the topics presented.
Meetings	Meetings held with communities in order to establish a collective and transparent dialogue on issues involving the Company's operations.
Press	Proactive and reactive work, providing information, releases and interviews to journalists on various topics related to the company.
Advertisements	Publications in newspapers and radio on topics of an institutional nature, relationships and awareness. Our advertisements are generally published and broadcast on commemorative dates.
Campaigns	Use of folders, banners, signs, leaflets, meetings, lectures, murals, posters, etc. to address topics of interest. Campaigns can be have an informative, institutional, motivational, awareness-raising or integrational approach.
Email	Through Klabin's electronic addresses, the public has the opportunity to establish a relationship with the Company, submit complaints, make requests, and ask questions: faleklabinpr@klabin.com.br
Fale com a Klabin (toll-free number)	The number 0800 728 0607 is a communication channel that allows the community to express themselves and submit complaints, suggestions, criticisms, or requests. With a 24-hour service, it is widely publicized to the community through leaflets and posters, as well as being identified on all vehicles in the forestry operation's own fleet and in third-party vehicles.

Each year, the Company has been increasing the dissemination of these channels, mainly in order to anticipate preventive actions linked to impacts and changes in the daily lives of communities. In 2023, as shown in the graph below, we continued to receive acknowledgement, requests (donations); complaints, questions and suggestions related to operational processes.

Total monthly demands – 2023



Classification of demands – 2023



RELATIONSHIP WITH TRADITIONAL COMMUNITIES:

Klabin identifies and establishes measures to safeguard the customary rights of local traditional communities (quilombolas (slave-descendants), indigenous peoples, and faxinalenses (commoners)), located close to its forest management areas.

3. KLABIN AND THE ENVIRONMENT

The concern for preserving the environment has guided the Company's actions since its foundation, both in industrial activities and forest management activities. This follows the mosaic concept, with planting of pine and eucalyptus trees interspersed with areas of native forests, preserving the fauna and flora.

Forest Areas: In Paraná, the Klabin area represents the largest green area in southern Brazil, being easily identifiable in satellite photos. Planted forests have made major contributions to preserving the environment, protecting biodiversity, and maintaining water sources.

High-Conservation-Value Areas (HCVA)

Areas that have one or more of the following characteristics:

- HCV* 1: Significant concentration of values related to biodiversity at a global, regional or national level;
- HCV 2: Extensive, landscape-level areas of global, regional or national significance, where viable populations of most or all natural species occur in natural patterns of distribution and abundance;
- HCV 3: Areas located within, or containing, rare, threatened or endangered ecosystems;
- HCV 4: Areas that provide basic environmental services in critical situations;

- HCV 5: Essential areas to meet the basic needs of local communities;
 - HCV 6: Critical areas for the traditional cultural identity of communities.
- *HCV: High Conservation Value

Following studies carried out by the Company and the hiring of a consulting firm, Klabin identified in some specific locations, within its properties in Paraná, attributes that meet a few items under this definition, according to the table below:

HCVA	HCV	Justification	Year of Creation
Varanal	1, 2, 3, 4	Primary forest, extending over thousands of hectares, with a crucial role in providing genetic connectivity between the various existing fragments	2008
Taboal do Mauá	1, 3, 4	Presence of <i>Dendropsophus anceps</i> ("Estrella treefrog")	2008
Invernadinha	1, 3, 4	Presence of endangered species in representative remnants	2010
Socimbra	1, 3, 4	Presence of endangered species	2010
Bacia Hidrográfica Três Bocas	4	Production of water in adequate quantity and quality for the public supply of the municipality of Jaguariaíva	2018
São Miguel Arcanjo	1, 2, 3	Presence of the primate species Muriqui do Sul (<i>Brachyteles arachnoides</i>)*. Natural ecological corridor between two protected areas that are known to harbor populations of the primate Muriqui do Sul. The São Miguel Farm area directly surrounds the main area of the World Heritage Site "Atlantic Forest of Southeastern Brazil"	2014

All High-Conservation-Value areas identified in the environmental attributes have periodic surveys of fauna (birds, mammals, and amphibians – the latter specific to the Taboal do Mauá HCVA) and flora, in addition to protection and monitoring measures for all HCVAs (environmental and social attributes), such as heritage surveillance, control of invasive exotic species, and prevention and combat of forest fires.



Social HCVA's	HCV Identified	Justification	Year of Creation
Augusta Vitória Colony (Ortigueira)	6	Cemetery with cultural connection in the community	2014
Cachoeirão (Tibagi)	6	Cemetery with cultural connection in the community	2014
Conceição (Tibagi)	6	Cemetery with cultural connection in the community	2014
Faxinal de São Pedro (Imbaú)	6	Cemetery with cultural connection in the community	2014

The four HCVA's consolidated in attribute HCV 6 – “Critical areas for the traditional cultural identity of local communities,” due to the occurrence of cemeteries inside Klabin properties, which have been used for generations by the surrounding populations, have protection and impact mitigation measures, aiming to maintain their attributes.



Klabin Archive

Augusta Vitória Colony Cemetery:

It is located in the municipality of Ortigueira, approximately 1.7 kilometers from the Augusta Vitória Colony community, which is considered an area of direct influence of the Ortigueira unit and is home to around 54 families.



Klabin Archive

Faxinal São Pedro Cemetery:

It is located in the municipality of Imbaú, about 1 kilometer from the Faxinal São Pedro community, which is around 150 years old.



Klabin Archive

Cachoeirão Cemetery: Consolidated in 2014, it is located in the municipality of Tibagi, approximately 1 kilometer from the Cachoeirão community.



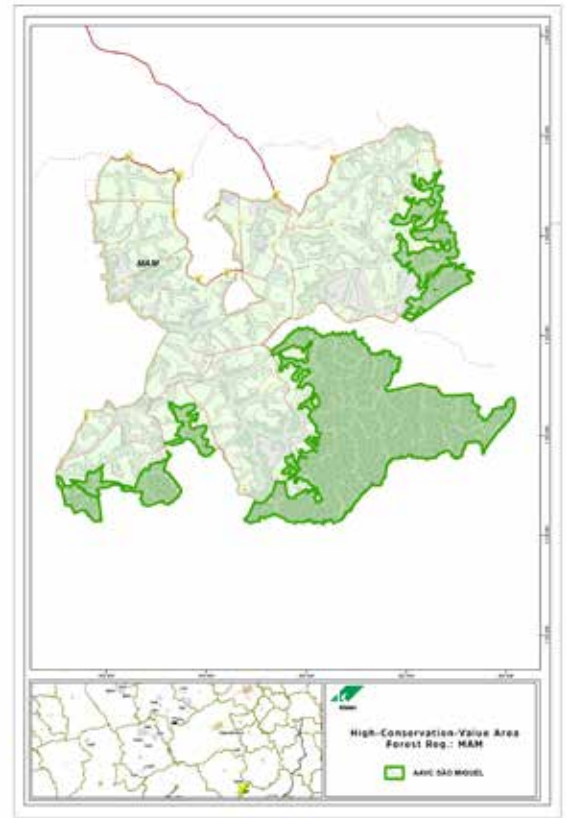
Klabin Archive

Conceição Cemetery: Consolidado em 2014; Está localizado no município de Tibagi à cerca de 600m da comunidade Conceição.; é utilizado pela comunidade local à mais de 100 anos.



Klabin Archive

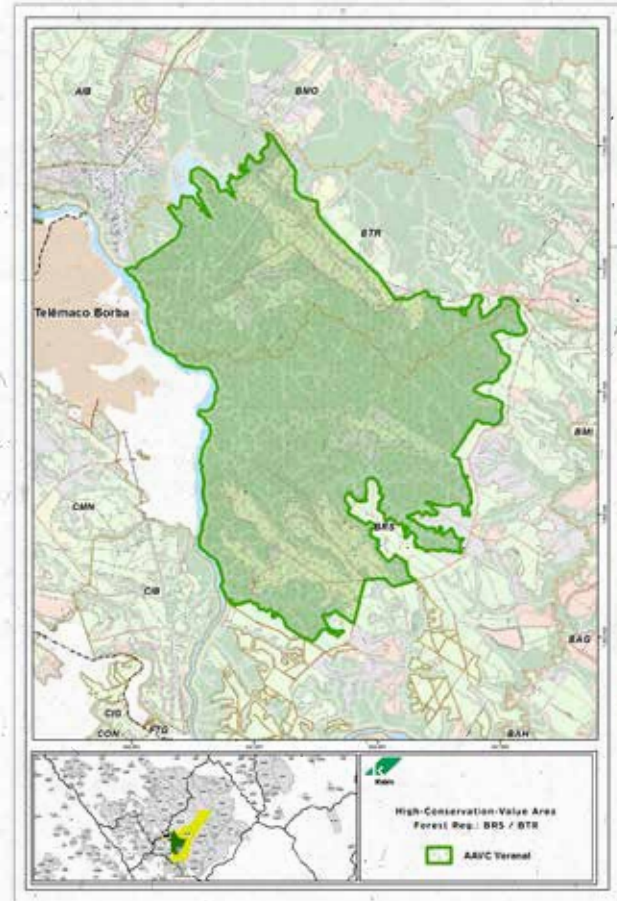
São Miguel Farm: Consolidated in 2014, it has a phytophysionomy characterized as a dense montane rainforest and is located in the municipalities of São Miguel Arcanjo and Tapiraí. The areas considered as HCVA are presented in three blocks of native vegetation, covering an area of 1,225.6 hectares. The following are the representative attributes for recognizing the high-conservation-value area.



Varanal: Consolidated in 2008, the Varanal area, covering 4,263.38 hectares, is located within the Klabin Ecological Park. Its choice is justified because it is composed of primary forest, covering thousands of hectares and playing a key role in supplying genetic connectivity between the different existing fragments.



Klabin Archive.



Taboal do Mauá: Consolidated in 2008, Taboal do Mauá is an area of approximately 7.26 hectares located on the right bank of the Mauá internal road. Its choice is justified by the presence of the Estrela treefrog (*Dendropsophus anceps*), a species of amphibian that, in 2008, was marked as threatened with extinction in Paraná, in the Critically Endangered category. Aiming at the conservation of this species, the population is monitored at the Taboal HCVA, maintaining the protection and isolation of the area and avoiding impacts on this population.



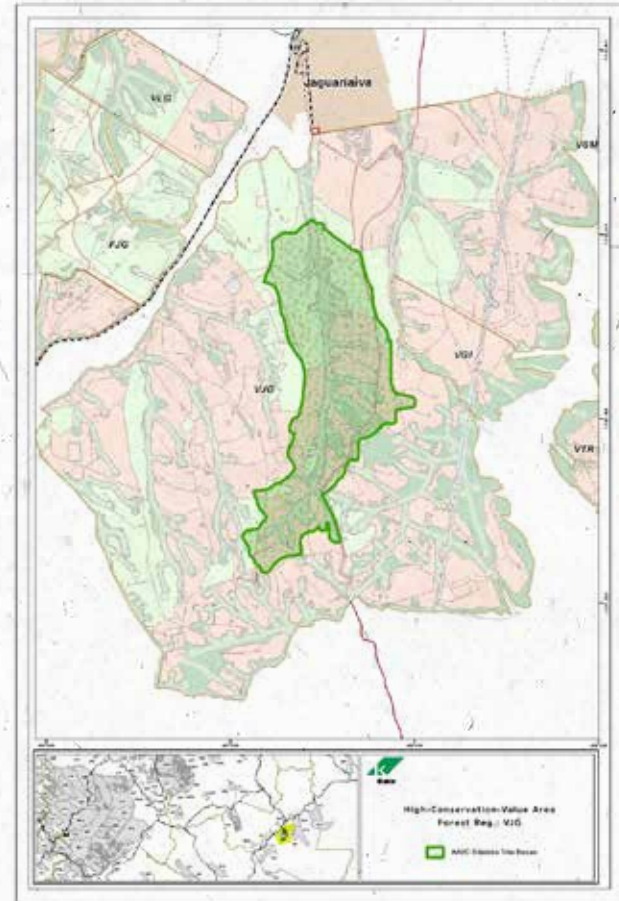
Dendropsophus anceps (Estrela treefrog)
Klabin Archive.



Três Bocas Drainage Basin: Consolidated in the first half of 2018, the area of 499.55 hectares is located in the municipality of Jaguariáiva. This area is of great importance for the production of water in adequate quantity and quality for the public supply of the municipality in which it is located. Furthermore, the combination of plant physiognomies results in great biodiversity, including endangered species.



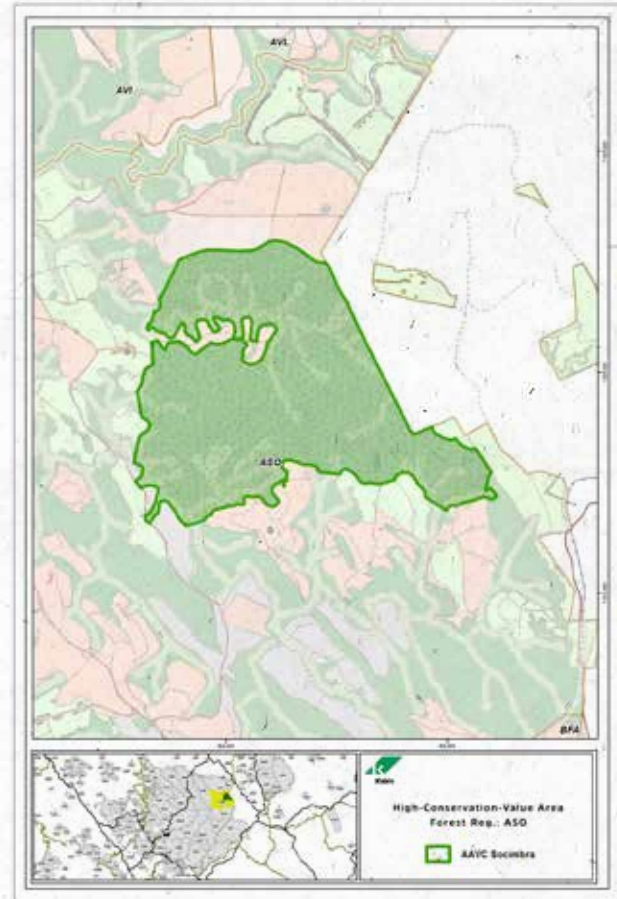
Klabin Archive.



Socimbra: Consolidated in the first half of 2010, the area, with 462.81 hectares, is located within the Private Natural Heritage Reserve (Reserva Particular do Patrimônio Natural – RPPN) Monte Alegre, in the Socimbra forest region. Its choice is justified by the presence of endangered species.



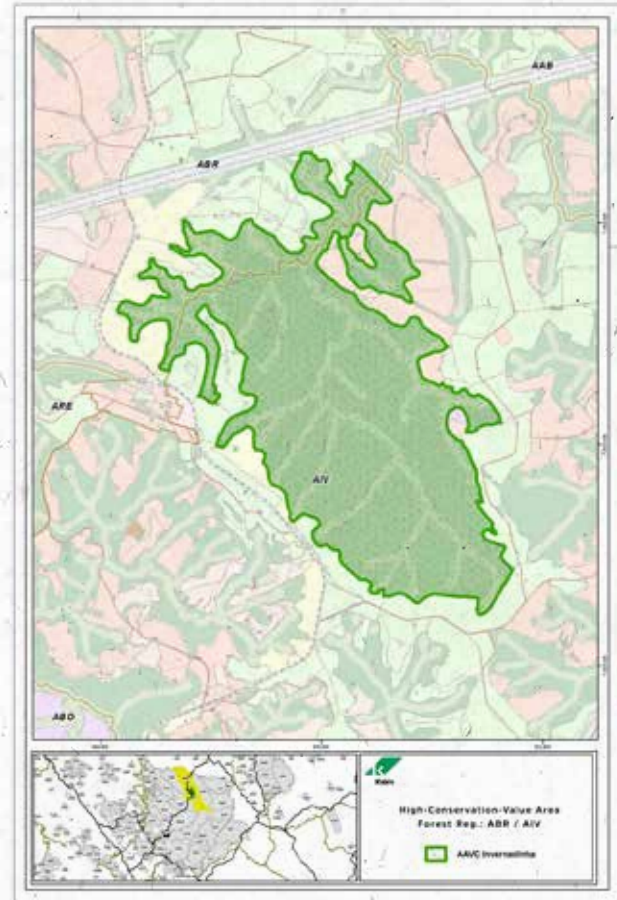
Klabin Archive.



Invernadinha: Consolidated in the first half of 2010, the area, with approximately 627.52 hectares, is located in the Invernadinha forest region. It highlights the presence of species threatened with extinction in representative remnants.



Klabin Archive.



KLABIN HERBARIUM

The Herbarium was established on October 17, 2002, with the aim of contemplating the appreciation of the diversity of botanical species occurring at the Monte Alegre Farm and studying the morphoanatomical characteristics of a number of species of interest, as well as becoming a regional botanical reference center and a faithful custodian of the Brazilian genetic heritage.

The work carried out at the herbarium is carried out in partnership with the State University of Maringá and has enabled the exchange of information between herbariums, as well as greater dissemination of the activity in scientific circles, giving the Klabin Herbarium greater

PHYTOTHERAPY

Established in 1984, Klabin's Phytotherapy Program seeks the sustainable use of biodiversity, combining environmental preservation with social responsibility. The project is based on the use of native forest species to compose herbal products intended mainly for employees. The Program was the first in the world, related to the management

of non-timber forest products, certified by the Forest Stewardship Council® (FSC®), in 1999. The local flora collection currently features 2,249 taxonomically confirmed species, of which 1,078 correspond to collections carried out at Fazenda Monte Alegre, encompassing 150 botanical families present, highlighting 11 families with the largest number of specimens. In the current collection, species can be classified into 628 trees, 939 shrubs, and 682 herbaceous species, while the rest are in the process of being revised. The exsiccatae originate from various regions of the Monte Alegre Farm, Telêmaco Borba, and other cities in Paraná, as well as other states in Brazil, the latter with having minor contributions. In percentage terms, it corresponds to 96% of the flora of the State of Paraná, with 76% corresponding to the city of Telêmaco Borba, 19% to Maringá, and 5% to other cities. Of the exsiccatae collected in Telêmaco Borba, 93% are from the Monte Alegre Farm and 7% from other locations in the municipality.

KLABIN ECOLOGICAL PARK

Created and maintained by Klabin in 1979, the Klabin Ecological Park (Parque Ecológico Klabin – PEK) is located within an area of 9,852 hectares, of which 91% are composed of native forests. This space began with the goal of “protecting exceptional attributes of nature, combining the full protection of flora, fauna, natural beauty, and water sources, with scientific and educational activities being admitted within the area.” Over time, it improved and increased its lines of action. Currently, PEK’s goal is to promote the conservation of biodiversity, the maintenance and rehabilitation of wild animals, the preservation of endangered species, the development of scientific research, and support for environmental education programs.

KLABIN ECOLOGICAL PARK ACTIVITIES

The Park has a space called “Biodiversity Circuit,” where 120 animals of 35 different species

are kept, in enclosures that reproduce their natural habitats while ensuring a better quality of life for each individual. It includes an “Ecological Trail” in the native forest, where visitors can come into direct contact with the natural environment, and the “Nature Interpretation Center,” which focuses on environmental education and contains interactive and educational stations with topics relating to the environment, sustainability and biodiversity of the region. The space also has a Wild Animal Rehabilitation Center, hospitalization areas, veterinary clinic, kitchen for preparing animal food, administrative office, and accommodation for researchers.

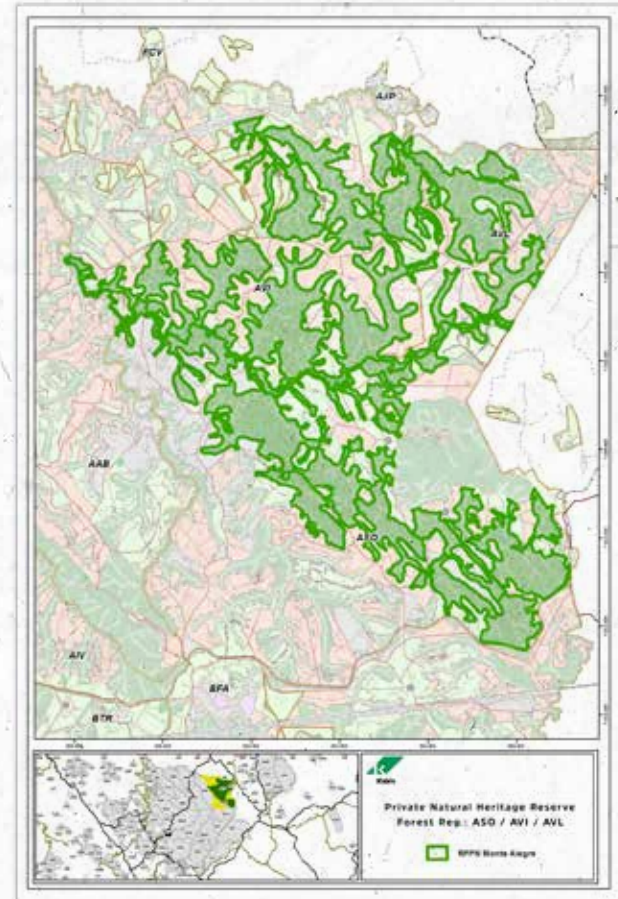


Klabin Archive.



RPPN

A Private Natural Heritage Reserve (Reserva Particular do Patrimônio Natural – RPPN) is a permanent conservation unit provided for by law, created in private areas with the aim of contributing to the sustainable management of native forests and the maintenance of biodiversity. Currently, Klabin maintains two RPPNs. One of the Private Natural Heritage Reserves (RPPN) is located within Fazenda Monte Alegre, in an area of 3,852 hectares. All information about the characteristics of the area, as well as the strategy for conserving the RPPN's attributes, is described in the Management Plan. The area was created in 1998 by Ordinance 182 of the Environmental Institute of Paraná (Instituto Ambiental do Paraná – IAP) and registered in perpetuity.



FLORA MONITORING

The Monte Alegre Farm is located in a region of the State of Paraná, where the predominant vegetation cover is classified as Mixed Ombrophilous Forest, complemented by semi-deciduous seasonal forest and natural fields.

Through studies carried out by several researchers, the existence of 1,294 species of flora was identified at the Monte Alegre Farm.

PARANÁ			
Type of Vegetation	Number of Species	IUCN Threatened Species (CR, EN, VU)	IUCN species with recognized conservation status (CR, EN, VU, NT, LC)
Trees/Shrubs	749	6	326
Epiphytes/Lianas/Vines	180	1	12
Herbaceous	314	0	19
Pteridophytes	3	0	0
TOTAL	1,246 SPECIES	7 ENDANGERED SPECIES	357 ENDANGERED SPECIES

CR: critically endangered; EN: endangered; VU: vulnerable; NT: near threatened; LC: least concern.

FLORA MONITORING

On the Klabin farms in the State of São Paulo, 404 species of flora were identified.

SÃO PAULO			
Type of Vegetation	Number of Species	IUCN Threatened Species (CR, EN, VU)	IUCN species with recognized conservation status (CR, EN, VU, NT, LC)
Trees/Shrubs	367	11	14
Epiphytes/Lianas/Vines	7	0	1
Herbaceous	30	2	3
TOTAL	404 SPECIES	13 ENDANGERED SPECIES	17 ENDANGERED SPECIES

Among the species identified, some are included in the conservation lists recognized by the São Paulo Department of the Environment (Secretaria do Meio Ambiente – SMA), released in 2016; in the Official National List of the Ministry of the Environment (Ministério do Meio Ambiente – MMA), released in 2014; and on the list of the International Union for the Conservation of Nature (IUCN), published in 2022.

FAUNA MONITORING

Constant studies are carried out to update the database of animals already found in the Company's areas. Among vertebrates, the classes of birds and mammals (in the latter, large mammals) are well known. The data on amphibians comes from studies carried out since 1999.

Check out the results found so far in the next table:

PARANÁ			
Group	Number of Species	IUCN Threatened Species (CR, EN, VU)	IUCN species with recognized conservation status (CR, EN, VU, NT, LC)
Amphibians	41	0	40
Birds	453	10	69
Invertebrates	26	0	0
Mammals	129	8	111
Pisces	56	1	13
Reptiles	39	0	36
TOTAL	744 SPECIES	19 ENDANGERED SPECIES	269 ENDANGERED SPECIES

Of the species sampled, several are on the Official List of Brazilian Species Threatened with Extinction, published by the Ministry of the Environment (MMA) in 2014, in the Red Book of Threatened Fauna in the State of Paraná, published by the Instituto Água e Terra (IAT) in 2004, and the 2022 International Union for Conservation of Nature (IUCN) lists.

SÃO PAULO			
Group	Number of Species	IUCN Threatened Species (CR, EN, VU)	IUCN species with recognized conservation status (CR, EN, VU, NT, LC)
Birds	389	7	26
Mamíferos	41	6	32
TOTAL	430 SPECIES	13 ENDANGERED SPECIES	58 ENDANGERED SPECIES

Of the species sampled, several of them are found in the Red Book of Threatened Fauna in the State of Paraná, published by IAT in 2008, in the Red Book of Brazilian Fauna Species Threatened with Extinction, published by BRASIL – 2022, and the IUCN website Red List – 2022.

The great wealth of species is favored by the presence of three types of plant formation, a unique situation in the State. Other major factors that help maintain local biodiversity are ecological corridors and the mosaic system between areas of planted forests and preserved native forests.

The number of recorded species places the Monte Alegre Farm and the Klabin areas as some of the most important regions in the State of Paraná in terms of biodiversity.



Social and Environmental Indicators



The social and environmental Indicators are established in accordance with Klabin's sustainability policy and the social and environmental strategy designed by the Environment and Community Relations area. They are monitored according to their economic, environmental and social performance, presented in the table on the following page.




1. TECHNICAL AND ECONOMIC MONITORING

ECONOMIC INDICATORS					
Monitoring	Indicator	Results			
		2021	2022	Results	
				2023	Target Monitoring
Monitoring of Forest Heritage (in hectares)	Area burned in forest fires	1836.46	105.1	PR: 57.22 SP: 0	😊
Harvested products (in metric tons)	Production of araucaria wood for sawmills	-	-	-	😊
	Production of pine wood for pulp	4,015,400	4,097,115.47	PR: 2,425,542.74 SP: 0.00	😊
	Production of pine wood for sawmills	375,290	226,474.16	PR: 370,749.54 SP: 0.00	😊
	Production of eucalyptus wood for pulp	6,325,500	7,145,058.12	PR: 5,511,129.57 SP: 128,859	😊
	Production of eucalyptus wood for sawmills	259,000	125,652.08	PR: 291,244.34 SP: 0.00	😊
	Production of wood for energy (pine and eucalyptus)	310,400	477,640	PR: 535,278.00 SP: 0.00	😊
Forest growth rates	Average Annual Increment (AAI)	As a result of the Forest Management and Genetic Improvement Program carried out, the AAI of forests has been increasing on average 2% per year for pine and 2.5% per year for eucalyptus, since 1970			
Monitoring of chemical products*	Herbicide consumption in the forest area – kg/ha	1.2	1.69	PR: 1.64 SP: 1.70	😊
	Herbicide consumption in the forest area – L/ ha	1.47	1.12	PR: 1.07 SP: 0.23	😊
	Anticide consumption – Kg/ha	2.71	3.1	PR: 3.21 SP: 2.52	😊











2. ENVIRONMENTAL MONITORING

ENVIRONMENTAL INDICATORS					
Monitoring	Indicator	Results			
		2021	2022	Results	
				2023	Target Monitoring
Biodiversity	Number of fauna species	742	742	PR: 744 SP: 430	
	Number of flora species	1,1282	1,246	PR: 1,294 SP: 472	

3. NON-WOOD FOREST PRODUCTS

ECONOMIC INDICATORS					
Monitoring	Indicator	Results			
		2021	2022	Results	
				2023	Target Monitoring
Products harvested (in metric tons) at the PR unit	Production of certified pure raw material	0	0	57	

4. SOCIAL MONITORING

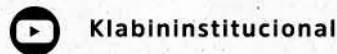
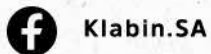
MONITORAMENTO SOCIAL				
Indicator	Results			
	2021	2022	Results	
			2023	Target Monitoring
Number of employees (Klabin SA)	1,827	1,821	PR: 1,799 SP: 287	
Number of employees (Klabin SA Florestal)	1,089	1,258	PR: 1,024 SP: 29	
Number of employees (third parties)	4,240	5,023	PR: 5,597 SP: 227	
Number of occupational accidents (Klabin SA + Klabin Florestal)	45	29	PR: 18 SP: 0	
Training hours	58,029.00	131,674	PR: 134,376 SP: 1,226	
Number of visitors – Ecological Park	Closed	Closed	2,558 visitors	
Number of forest development agreements	1,953	1,984	PR: 1,968 contracts	
Number of visitors served at the PR unit	27	597	1,170	
Number of meetings to discuss ADI1 socioeconomic indicators	10	5	5	
Community perception survey	80.3	84.5	81.3	

1. ADI: Area of Direct Influence – Telêmaco Borba, Imbaú, and Ortigueira, in the state of PR.

2 0 2 4

Public SUMMARY

Forest Management Plan | Paraná and São Paulo



0800 728 0607 - Paraná and São Paulo

www.klabin.com.br

